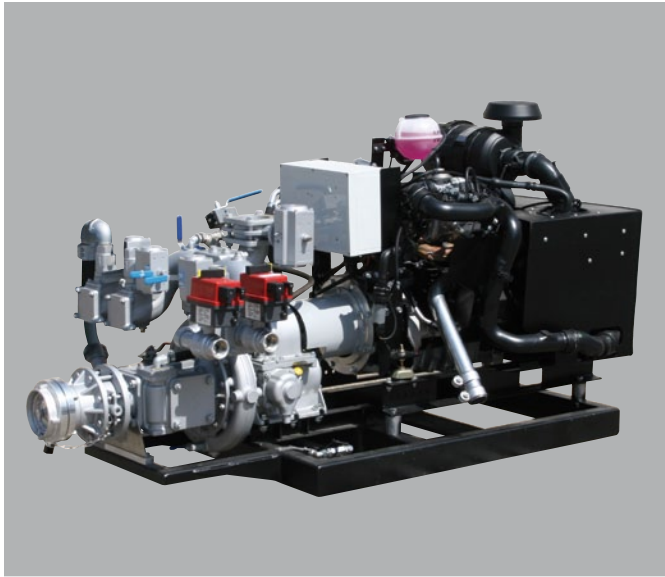
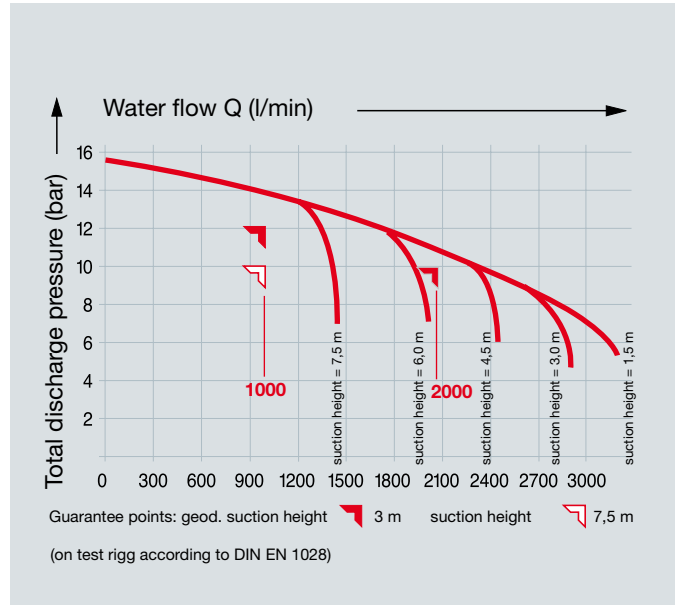




FPN 10-2000-1A



FPN 10-2000-1A



Pump type	Art. no.	Engine	Pump output max. at 10 bar Hs 3,0 m l/min	Weight approx. kg	Dimensions approx. LxWxH mm
FPN 10-2000-1 with set-up gearbox, transmission $i = 1:1,35$	1061791	VW industrial Diesel engine type TDI 2,0-463 MC engine with 4 cylinders in line water-cooled, 63 kW (85 HP) electric starter battery 12 V/66 Ah generator 12 V/90 A fuel tank approx. 50 l	2200	650	2000x1000x1200

Basic equipment

1stage centrifugal fire pump,
 1 suction inlet size A,
 2 delivery outlets size B with self-closing DIN-screw down valves,
 suction inlets and delivery outlets with blank cap.

Priming system: fully automatic TROKOMAT PLUS with cover

Auxiliary equipment and systems

on request, additionally charged:
 suction inlet respectively delivery outlets on customer request
 automatic pressure governor (TOURMAT), single axle platform trailer.

Gauges and controls

Pressure gauge and mano-vacuummeter.
 All instruments and switches for engine operation and control are integrated in an instrument box.

Pump drive

via joint shaft and elastic coupling

Paintwork

basic frame black
 pump silver coloured RAL 9006
 cover red RAL 3000